



Ball Transfer Unit A2011-15

Ball Units Series A-Flange - Wheel DL


 -30 °C - +70 °C


swivels easily


wear resistant


shock proof

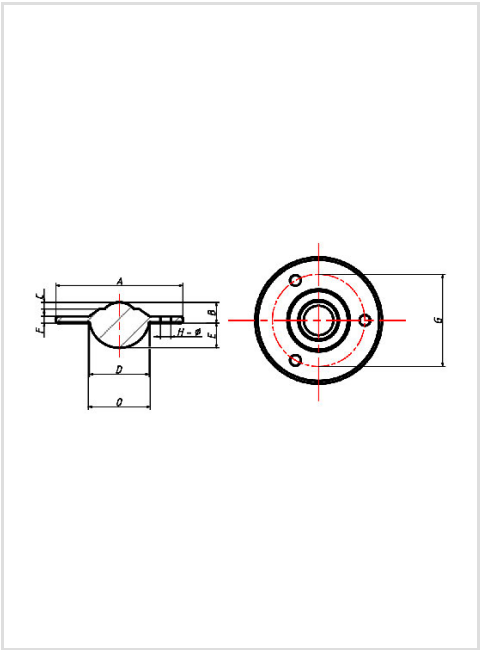

floor protective


weather proof

Wheel

Ball: zinc-plated or nylon or stainless steel with sealing lip

Housing, zinc-plated or stainless steel



Ball Transfer Unit	
Ball-Ø mm:	40
Finish housing:	stainless steel
Finish Balls:	stainless steel
Load Capacity up kg:	140
Load Capacity down kg:	60
A mm:	89,0
B mm:	21,4
C mm:	8,7
D mm:	55,6
E mm:	24,6
F mm:	6,0
G mm:	70,0
H mm:	7,0
Ø mm:	56,0

Advantages

- ✓ Low profile
- ✓ Several holes to let out dirt
- ✓ Sealing lip

©Copyright 2024 Rollenbau GmbH, www.rollenbau.at 05.05.2024

Applications

- Haulage way
- Assembly lines
- Mechatronik